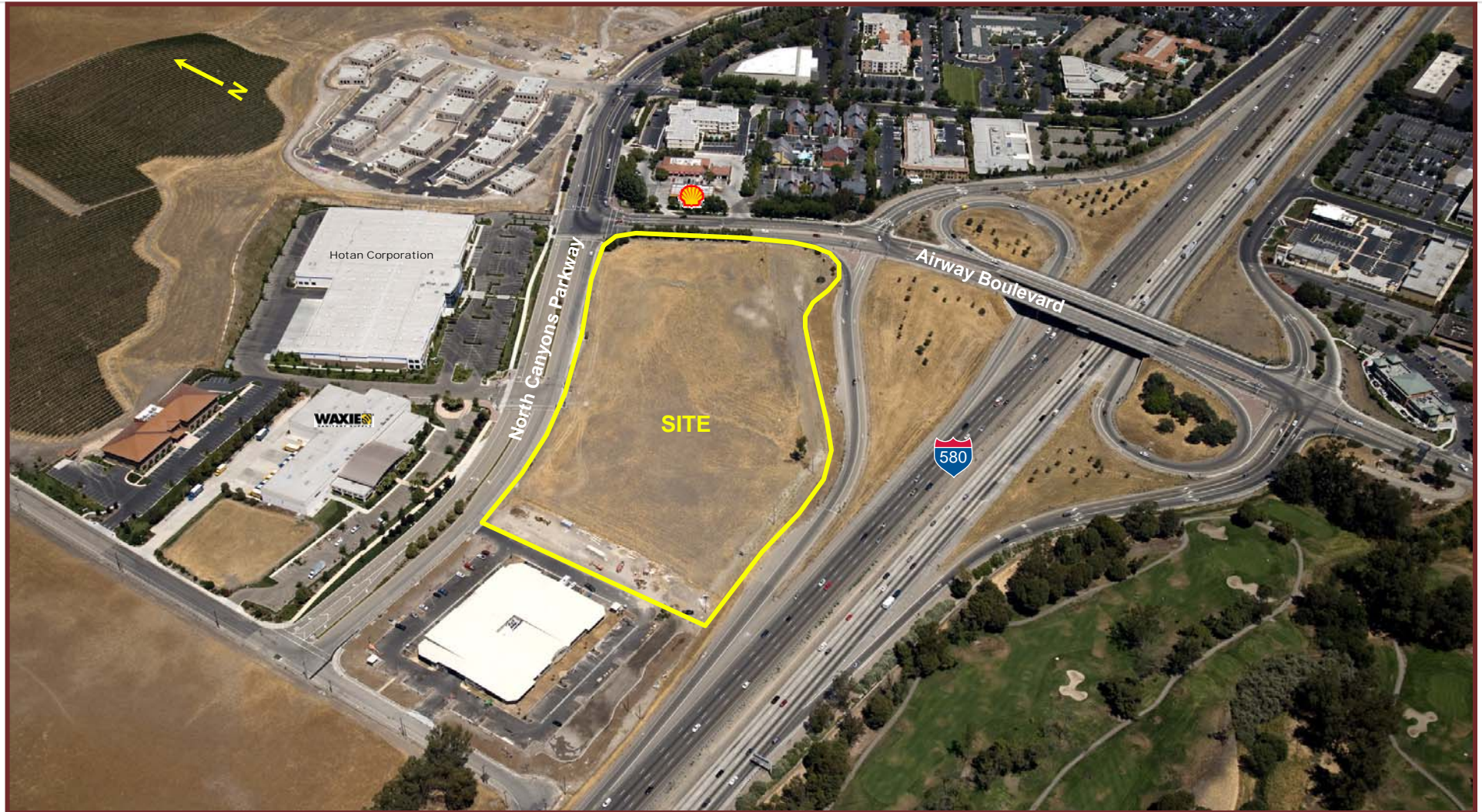


PRIME I-580 INTERCHANGE LOCATION FOR SALE, BTS or GROUND LEASE

± 11.29 ACRES at the NWC of I-580 & AIRWAY BLVD, LIVERMORE, CA



- Rare interchange development site
- High visibility location, with nearly 200,000 vehicles passing each day
- Over 1,000 feet of freeway frontage
- Central location at the edge of the Bay Area urban core
- Tentative map in place, 5 parcels
- ±4.1 acres zoned CHS (4 parcels), ±7.18 acres zoned PD-00-181 (1 parcel)
- Flexible parcel sizes and dimensions
- Build to suit proforma upon request

PRIME I-580 INTERCHANGE LOCATION FOR SALE, BTS or GROUND LEASE

± 11.29 ACRES at the NWC of I-580 & AIRWAY BLVD, LIVERMORE, CA

For more information, contact:

Doug Norton
Senior Vice President
T 510.874.1930
doug.norton@cbre.com

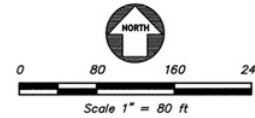
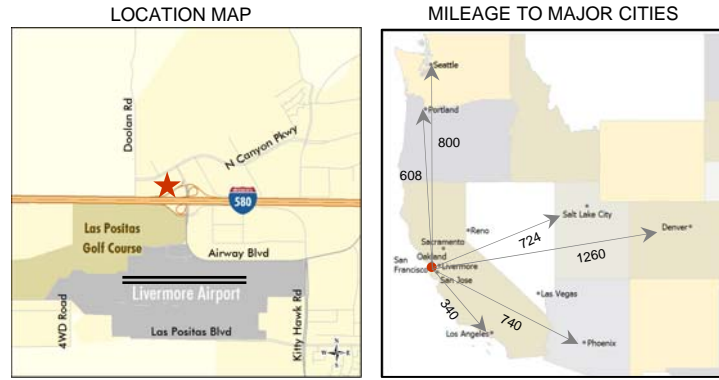
Michael Walker
Senior Associate
T 510.874.1979
michael.walker@cbre.com

Conor Famulener
Senior Associate
T 510.874.1918
conor.famulener@cbre.com

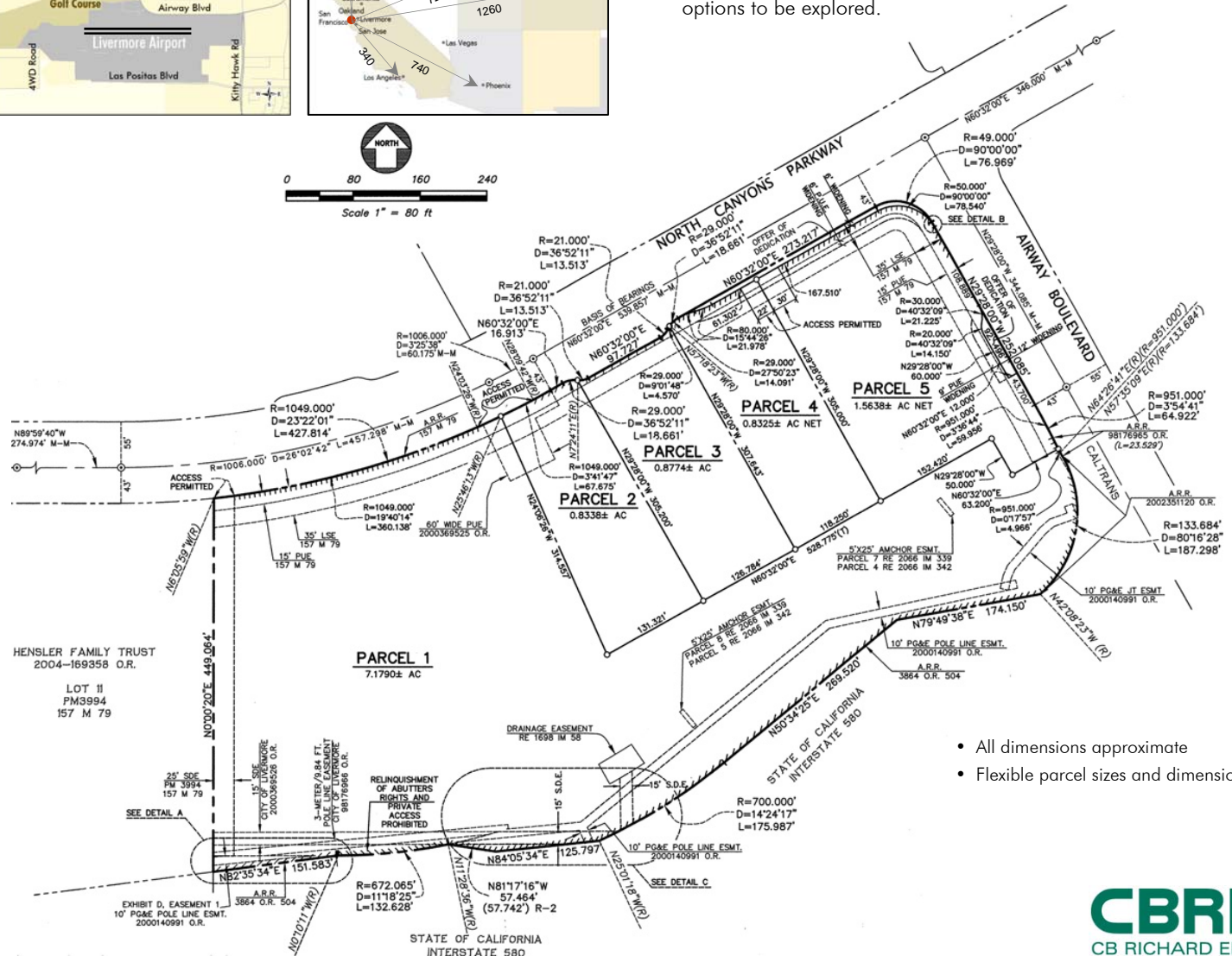
CB Richard Ellis
555 12th Street, Suite 900
Oakland, CA 94607

www.cbre.com/oakland

City	Approx. Freeway Miles
San Francisco	40
Oakland	25
San Jose	31
Sacramento	93
Reno	180
Fresno	138
Los Angeles	340
Salt Lake City	724
Denver	1260
Portland	608
Seattle	800



This high visibility property is located immediately adjacent the I-580 / Airway Boulevard interchange, at the signalized intersection of Airway Boulevard and North Canyons Parkway. This high traffic location offers 5 subdivided parcels totaling ±11.29 acres that will support a wide variety of uses from retail to sales/service and will-call light industrial. Land sale, build to suit for lease or sale are options to be explored.



- All dimensions approximate
- Flexible parcel sizes and dimensions